

Making equity a priority.

In this update, we spotlight equality and offer insight into how our investments and engagements can help promote inclusivity. When historically marginalized groups face unfair treatment or effects, investors and companies can use their leverage points for those people that may lack basic needs, be hurt, or left behind. On the heels of rising and unusually high inflation, we're thinking about the particular needs of low-wage workers whose paychecks may not be enough to cover essential costs of living, such as food and gas.

As we remember the innocent lives lost to gun violence, we reflect on how investors' dollars can help play a role in this cycle. And amidst an intensifying climate crisis, we highlight aspects of our work that aim to help the communities that are more vulnerable to climate change.

In this edition

3 Workforce Equity at the Leadership Level

3 Sustainable Food Systems

4 Mobilizing Investors Around Forests

4 Climate Change and a Just Transition

5 Investors' Role in the Cycle of Gun Violence

*The UN Sustainable Goals (SDGs)

In the seven years since United Nations member states adopted the 2030 Agenda for Sustainable Development, the Sustainable Development Goals (SDGs) have been widely embraced by governments, civil society organizations, companies, and investors. The SDGs aim to address broad global topics such as poverty eradication, food security, protection of forests, sustainable cities and economic growth, gender equality, and climate change.

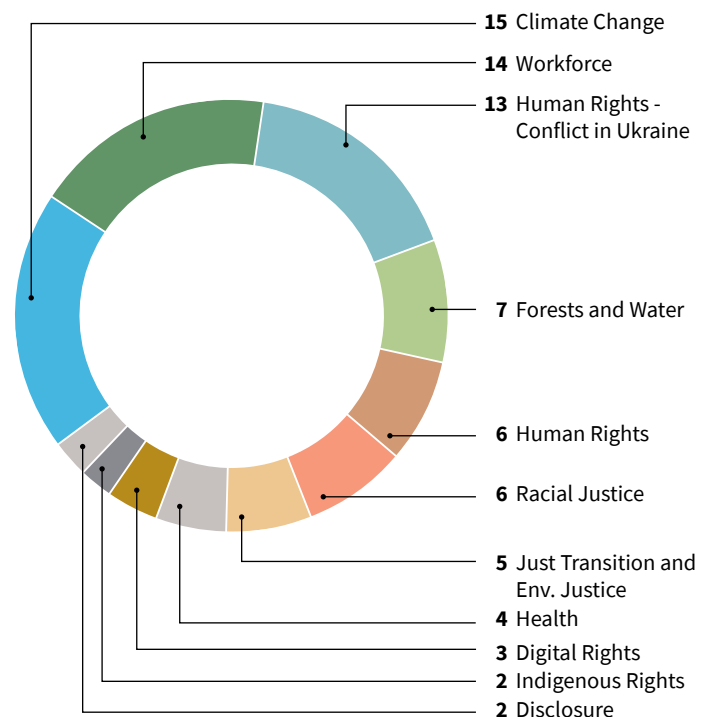
In each impact update, we'll feature a few of our engagements alongside an investment highlight and show you which SDGs these are aligned with.

	Goal 1: End poverty in all its forms everywhere
	Goal 2: End hunger, achieve food security and improved nutrition and promote sustainable agriculture
	Goal 3: Ensure healthy lives and promote well-being for all at all ages
	Goal 4: Ensure inclusive and equitable quality education and promote lifelong learning opportunities for all
	Goal 5: Achieve gender equality and empower all women and girls
	Goal 6: Ensure availability and sustainable management of water and sanitation for all
	Goal 7: Ensure access to affordable, reliable, sustainable and modern energy for all
	Goal 8: Promote sustained, inclusive and sustainable economic growth, full and productive employment and decent work for all
	Goal 9: Build resilient infrastructure, promote inclusive and sustainable industrialization and foster innovation
	Goal 10: Reduce inequality within and among countries
	Goal 11: Make cities and human settlements inclusive, safe, resilient and sustainable
	Goal 12: Ensure sustainable consumption and production patterns
	Goal 13: Take urgent action to combat climate change and its impacts
	Goal 14: Conserve and sustainably use the oceans, seas and marine resources for sustainable development
	Goal 15: Protect, restore and promote sustainable use of terrestrial ecosystems, sustainably manage forests, combat desertification, and halt and reverse land degradation and halt biodiversity loss
	Goal 16: Promote peaceful and inclusive societies for sustainable development, provide access to justice for all and build effective, accountable and inclusive institutions at all levels
	Goal 17: Strengthen the means of implementation and revitalize the global partnership for sustainable development

<https://sdgs.un.org/goals>

Engagement Overview

Domini meets with company executives on its own and in collaboration with other investors to encourage stronger policies and practices on the issues that matter to us. Aligned with our standards, we seek improved disclosure, more responsible practices, and address emerging issues with our companies. Through this constructive interaction – via letters, dialogues, shareholder proposals, and proxy votes – Domini communicates its expectations to companies and encourages innovation and business models that uphold respect for human rights while contributing to ecological sustainability and resilience.



Q2 Engagement Reach

Number of unique companies engaged

23

U.S. Companies

Total number of engagements*

77

21

Non-U.S. Companies

* Includes engagements with non-corporate entities and multiple engagements with individual companies

Workforce Equity at the Leadership Level



*see page 2

We began engaging with **Disney** on workforce issues in 2020, when we encouraged the company to ensure that its board had specific oversight of the needs and priorities of all workers. Following our engagement, the Compensation Committee of the board, which has traditionally addressed compensation and pay for the CEO and senior executives, added “workforce” equity to its charter.

More recently, we followed up with their Chair of the Compensation Committee to understand how its new emphasis on workforce equity has impacted its scope of work, the reporting it receives from management, and its broader workforce strategy. It is crucial that Disney’s board has oversight of workforce issues, in order to help the company to attract and retain a diverse and capable workforce, in part due to past criticism around pay equity and racial justice. We appreciate the firm’s efforts to

foster an inclusive workforce through the *Reimagine Tomorrow* program and its increased disclosure of workforce demographic information. We will continue to encourage the board to develop an equitable strategy for all its workforce.

Read more on our work in this area: <https://www.domini.com/insights/climate-led-impact-leading>

Investment Highlight: Domini Impact Equity Fund

Accenture PLC provides management consulting, technology, and outsourcing services throughout various business sectors. Within the firm, Accenture supports employees through various programs, such as 100% pay equity for women compared to men in every country the company operates in; a mental resilience program that offers 24/7 assistance; and for fiscal year 2022, they have a plan to fill 20% of its entry-level roles in the U.S. from its apprenticeship program which does not require a four-year college degree.

Sustainable Food Systems



*see page 2

Our food system is integral to the climate transition—so companies will need to transform their business models in meaningful ways. We signed an investor letter to the **UN Food and Agriculture Organization**, urging it to develop a roadmap on how to align farming practices with the 1.5 °C warming limit, while protecting health and livelihoods.

We also joined a FAIRR engagement with **Saputo**, a Canadian cheese and dairy company, on how it is approaching its climate-related business transformation. We support Saputo’s current investments in plant-based cheese and dairy, which have a low carbon footprint and are more sustainable than animal-based products. Research, development, and investment is needed to scale innovation, meet nutritional needs, and make alternatives accessible to consumers. Companies must improve food system sustainability by protecting the rights of farmworkers, who face increasing risks of forced labor, sexual harassment, heat stress, and low wages. Our proposal at **Kroger**, which received support from 20% of shareholders, called for increased human rights protections for farmworkers, modeled after a human rights program developed by the Coalition of Immokalee Workers. We’ll continue to engage in support of workers’ rights.

Climate Change and a Just Transition



**see page 2*

As more companies commit to a just transition, we encourage them to work directly with groups that have the most at stake. Our recent engagement with the global utility **National Grid PLC** highlights the need for climate action that is both ambitious and intersectional. We expressed support for its net-zero emissions commitment, but also urged the company to center the needs of stakeholders most likely to be impacted: workers and community groups.

We sought insights from union representatives and local environmental advocates in Massachusetts and New York,

where National Grid has a presence. This gave everyone a clearer picture of how the company's climate policies work in practice. These experts helped us identify areas for continued improvement: making sure stakeholders are at the table, applying a racial justice lens, and building trust with community partners. A thoughtful, equitable climate transition plan will advance a clean energy future, while also assuring people that air and water pollution in their communities is under control and job security will be maintained.

Investment Highlight: Domini International Opportunities Fund

SSE PLC, based in Scotland, engages in the generation, transmission, distribution, and supply of electricity. In 2020, the company closed its last coal-fired station and no longer generates electricity from coal. Its off- and on-shore wind accounted for 24.6% of total generation capacity and 20.8% of total generation output. SSE has set net-zero targets and has implemented a just transition strategy, which lays out decent and fair work for its current and future employees and aims to provide its energy consumers with affordable and accessible energy services.

Mobilizing Investors Around Forests



**see page 2*

We continue to mobilize investor support for deforestation-free policies at the state and federal level. With the backing of institutional investors representing \$2.2 trillion in assets, we co-led an investor letter that we brought to New York state legislators. It explained how well-designed forest policy that prohibits deforestation in state purchasing is crucial to economic resilience and our climate response. We're also working on other collaborative efforts—with the Financial Sector Commitment to Eliminate Commodity-Driven Deforestation, as well as through our role on the advisory board of the Finance for Biodiversity Foundation.

Behind many of these efforts is a need for investors to have comprehensive and comparable information about companies' governance and action on climate change. Further, we believe biodiversity, land use change, just transition and respect for the rights of Indigenous Peoples

and local communities are inseparable from climate issues. We submitted a comment to the U.S. Securities and Exchange Commission (SEC), as it develops new rules for companies' required disclosure of climate-related information. We wrote in support of the SEC's current proposal, explaining how we use relevant climate information in our investment analysis, engagement work, and proxy voting.

Investment Highlight: Domini Impact International Equity Fund

From the company that finances a project to the one that is hired for the physical demolition of land, there are lines of entities responsible for deforestation. At Domini, we look for companies that actively incorporate policies that engage forests in a sustainable manner. **Thanachart Bank**, committed to stop financing activities related to oil sand and commercial logging operations in primary tropical forests in 2021. In the same year, TMB established a \$67.1 M fund for green and sustainability linked loans to support a wide range of green projects.

Investment Highlight: Domini Impact Equity Fund

Palm oil plantations have displaced some of the most biodiverse forests globally, resulting in a devastating impact on biodiversity, plant and animal species. At Domini, we look for companies that are managing their palm oil supply chain responsibly. 99% of palm oil sourced by **Mondelēz International Inc** comes from suppliers aligned with the company's Palm Oil Action Plan. Since 2013, 100% of its palm oil has been certified by the Roundtable on Sustainable Palm Oil (RSPO), and 98% is traceable to the mill.

Bond Fund: The Human Right to Clean Water

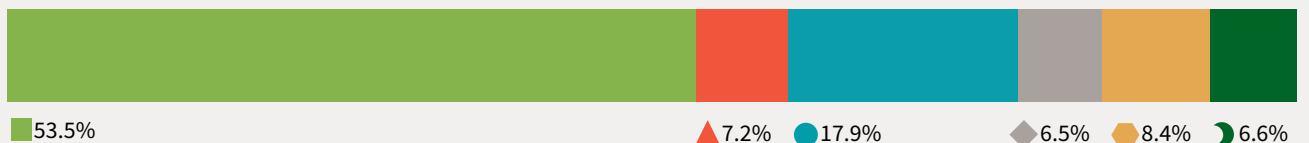


We prioritize investments that improve access to water, sanitation services, and other public goods. In a recent engagement with **Aegea Finance**, we commended the company's work in Brazil and want to understand how it is fulfilling the human right to water. Its projects will help provide clean water to people who previously lacked access and improve sanitation services, likely benefiting millions of people.

It is worth weighing concerns, however, that the privatization of water services in the country could result in increased costs and lower access for people who are most vulnerable. We sought to better understand what systems Aegea has in place to ensure that it is delivering services in Brazil in a way that facilitates equitable, affordable access. This is especially important in the

context of systemic racism, racial discrimination, and prejudice, which may negatively impact access. We asked about Aegea's equity commitments, and how its efforts to increase diversity and representation within the company might provide meaningful outcomes for its customers.

Domini Impact Bond Fund Theme Allocations²



Access to Housing

Supports affordable mortgage credit & rental properties, multifamily collateralized mortgage obligations, and other residential mortgage backed securities.

Economic & Community Development

Supports nonprofit education, rural & agricultural communities, creative economy & public interest, transportation, access to water, business & job creation, and community development financial institutions.

Corporate Debt³

Supports corporate general obligations & bank loans of companies that meet Domini's Impact Investment Standards.

Health, Well-Being & Aging Society

Supports nonprofit healthcare and research facilities, housing and healthcare services, and pensions.

Non-Housing Asset-Backed Securities

Supports commercial mortgage-backed securities, auto loans, and other asset-backed securities that meet Domini's Impact Investment Standards.

Low-Carbon Transition

Supports renewable energy, energy efficiency and green buildings, sustainable cities, sustainable forestry and conservation, and corporate green and sustainability bonds.

² Based on portfolio holdings as of 6/30/2022, excluding cash & cash equivalents, cash offsets, futures, swaps and options with the exception of short-term U.S. Agency bonds and Certificates of Deposit, which are reflected in this reporting. Numbers may not sum to totals due to rounding. The composition of the Fund's portfolio is subject to change. Visit domini.com to view the most current list of the Fund's holdings.

³ "Corporate Debt" includes general-obligation corporate bonds, bank loans, and corporate debt not classified under other themes.



Investment Highlight: Domini Impact Bond Fund

Aegea Finance delivers clean water and manages sewage treatment services for areas that lack basic sanitation in Brazil. During the COVID-19 pandemic, Aegea implemented contingency plans to ensure uninterrupted water and sewage supply in the cities where they operate, invested to increase the basic sanitation network, and disinfected high traffic roads. Additionally, they installed public sinks in central areas in several cities where they operate to serve the homeless population with soap dispensers.

Investors' Role in the Cycle of Gun Violence

The U.S. has once more found itself asking the question: What can be done to assure that “never again,” means never again? As the country repeatedly and collectively mourns the loss of lives due to gun violence, responsible investing reminds us that even in the wake of this devastation, our investments can have a role in the solution.

In Buffalo, New York at a grocery store, we saw a racially motivated attack, and in the midst of grieving those who were lost, we witnessed the devastating elementary school shooting unfold just ten days later in Uvalde, Texas, followed by a shooting at a 4th of July parade in Highland Park, Illinois. Public opinion polling reports that 53% of the country is in favor of more gun control measures—yet the United States leads high-income nations in gun ownership and gun violence. While additional polls show that self-defense and hunting are top reasons why individuals own firearms, violence still persists throughout the nation. Due to the reality that the business of gun manufacturing is profitable, investors can proactively assess their portfolios and divest from entities that are contributing to the cycle of gun violence.

How does the private sector participate in the cycle of gun violence?

Finding a legislative solution takes time, and that solution may not be sufficient for every stakeholder, which we have seen before. Both chambers of U.S. Congress passed legislation at a compromise, which President Biden signed into law, that focuses on mental health, school safety, and red-flag laws. Other countries that have enacted gun control measures have shown that when these mandates are applied accordingly, gun violence and gun deaths decrease considerably. But beyond law-making, investors can change their investment strategies to make sure they are not profiting from the manufacturing or distribution of guns.

Corporations play a large role in this conversation because they profit from the sale of guns, the manufacturing of guns, and the laws in place that allow access to guns. After the most recent shootings and decision from the U.S. Supreme Court to roll back gun safety measures, stocks of gun manufacturers rose—a seemingly regular occurrence throughout history. Companies respond to quarterly pressure to sell and distribute guns and related products, and as investors we have the power to divest from those entities in our portfolios. Alongside impact investors, some corporations have already responded

to the ongoing crisis and changed their policies as they recognize their role; for example, Dick's Sporting Goods updated policies by raising the age to buy guns, limiting which guns they sell, and stopping the sale of guns throughout physical locations.

Domini's Approach and Commitment

For 25 years, Domini has always excluded corporations across our portfolio that are significantly involved in the production of weapons and civilian firearms. Through our investment standards, we do not waiver from our goal of universal human dignity or our standard to not invest in products or services that have the potential to cause incalculable harm. Some of the greatest dangers we face both at home and abroad are tied to weapons of mass destruction, which is



The care is mutual. The funds are too.

Seeking to harness the power of finance to create a better world involves many things. Below, we discuss four of them. Namely, detailing the impacts of our work, collaborating with global investing initiatives, pivoting to a more sustainable economy, and connecting with investors nationwide.

why Domini also excludes investments in United States Treasury securities due to the country's leadership position in the global nuclear weapons arsenal. This quarter, we reaffirmed our commitment by signing an investor letter in support of the Treaty on the Prohibition of Nuclear Weapons, which outlaws nuclear weapons as well as any form of assistance with their manufacture or production. Additionally, we engage with companies on peripheral aspects, like through our engagement with Amazon.com, where we worked with shareholders on topics such as removing products from their store that serve as accessories for guns and ammunition.

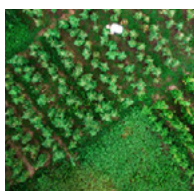
At the core of our work is our belief that investments we make today will shape the world we live in tomorrow, and that includes supporting the on-going effort to assure that "never again" actually means never again. In these trying times, knowing where your dollars are invested is essential. As we continue to harness the power of finance to create a better world, we are reminded that when we unite under the same mission, hope and change is possible.



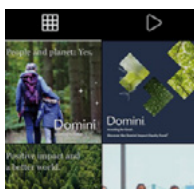
New website. Same goals. We've refreshed our website! Visit our new site, and you'll discover that while its design may be new, our dedication to the goals of universal human dignity and ecological sustainability never waver. Thank you for being a part of our continued journey. [Discover here. domini.com/welcome](https://domini.com/welcome)



Recognizing and celebrating Juneteenth Adopted as a federal holiday in 2021, Juneteenth is a commemoration of the emancipation of enslaved people in the United States. We acknowledged Juneteenth at Domini last month and took a moment to reflect on our continuing efforts to further racial justice. [Read more domini.com/Juneteenth](https://domini.com/Juneteenth)



How we grow our food Preventing hunger and combating climate change are top global priorities, so it's crucial that food producers reduce carbon emissions and support biodiversity. Our Engagement Director, Mary Beth Gallagher, wrote about land use, Indigenous agricultural models, and Domini's work. [Read article at domini.com/food](https://domini.com/food)



Find us on Instagram If you don't know already, we're on Instagram (@dominifunds). It's another place where we share updates about our work and the issues we're focused on. Visit our page and follow us! We're always excited to connect with our investor community.



Domini on the road Domini is excited to be back on the in-person conference circuit. Next, we'll be in:
San Francisco for SOCAP22 on October 17-20
New York City for the Women Adviser Summit 2022 on November 16

Before investing, consider each Fund's investment objectives, risks, charges and expenses. Contact us at 1.800.582.6757 for a prospectus containing this and other important information. Read it carefully.

An investment in the Domini Funds is not a bank deposit and is not insured. Investing involves risk, including possible loss of principal. The market value of Fund investments will fluctuate. The Domini Impact Equity Fund is subject to certain risks including impact investing, portfolio management, information, market, recent events, and mid-to large cap companies' risks. The Domini International Opportunities Fund is subject to certain risks including foreign investing, geographic focus, country, currency, impact investing, and portfolio management risks. The Domini Sustainable Solutions Fund is subject to certain risks including sustainable investing, portfolio management, information, market, recent events, mid- to large-cap companies and small-cap companies' risks. The Domini Impact International Equity Fund is subject to certain risks including foreign investing, emerging markets, geographic focus, country, currency, impact investing, and portfolio management risks. Investing internationally involves special risks, such as currency fluctuations, social and economic instability, differing securities regulations and accounting standards, limited public information, possible changes in taxation, and periods of illiquidity. These risks may be heightened in connection with investments in emerging market countries. The Domini Impact Bond Fund is subject to certain risks including impact investing, portfolio management, style, information, market, recent events, interest rate and credit risks.

The Adviser's evaluation of environmental and social factors in its investment selections and the timing of the Subadviser's implementation of the Adviser's investment selections will affect the Fund's exposure to certain issuers, industries, sectors, regions, and countries and may impact the relative financial performance of the Fund depending on whether such investments are in or out of favor. The value of your investment may decrease if the Adviser's or Subadviser's judgement about Fund investments does not produce the desired results. There is

a risk that information used by the Adviser to evaluate environmental and social factors, may not be readily available or complete, which could negatively impact the Adviser's ability to evaluate such factors and Fund performance. As of 6/30/22, these securities represented the following percentages of the Domini Impact International Equity Fund portfolio: Thanachart Bank PCL (TMB) [0.11%]. These securities represented the following percentages of the Domini Impact Equity Fund's portfolio: Accenture PLC [0.76%], Amazon.com Inc [3.89%], Kroger Co [0.13%], Mondelēz International Inc [0.35%], National Grid PLC [0.19%], SSE PLC [0.09%], Walt Disney Co/The [0.71%]. These securities represented the following percentages of the Domini Impact Bond Fund's portfolio: Aegea Finance SARL [0.39%]. These securities represented the following percentages of the Domini International Opportunities Fund's portfolio: Kroger Co [0.47%], National Grid PLC [0.69%], Saputo Inc [0.09%], SSE PLC [0.32%]. Nothing herein is to be considered a recommendation concerning the merits of any noted company, or an offer of sale or solicitation of an offer to buy shares of any Fund or company referenced herein. Such offering is only made by prospectus, which includes details as to the offering price and other material information. As of 6/30/22, the following company was not held by any of the Domini Funds: Dicks Sporting Goods Inc.

The Domini Funds are only offered for sale in the United States. DSIL Investment Services LLC (DSILD), Distributor, Member FINRA. Domini Impact Investments LLC (Domini) is the Funds' investment adviser. The Funds are subadvised by unaffiliated entities.

Domini Impact Investments®, Domini®, Investing for Good®, and The Way You Invest Matters® are registered service marks of Domini Impact Investments LLC ("Domini"). Domini International Opportunities FundSM, Domini Sustainable Solutions FundSM, Domini Impact Equity FundSM, Domini Impact International Equity FundSM, Domini Impact Bond FundSM are service marks of Domini. The Domini Impact Investment Standards is copyright © 2006-2022 by Domini Impact Investments LLC. All rights reserved. 7/22

“If we are to live on a green planet and if we are to allow every human to thrive, investors must play an active role.”

Amy Domini