

## Domini Forest Project

### System Dynamics Maps 2022

These graphics provide simple illustrations of two contrasting system dynamics in which forests and related lands can either play a positive or negative role.

## VALUE CREATING SYSTEM

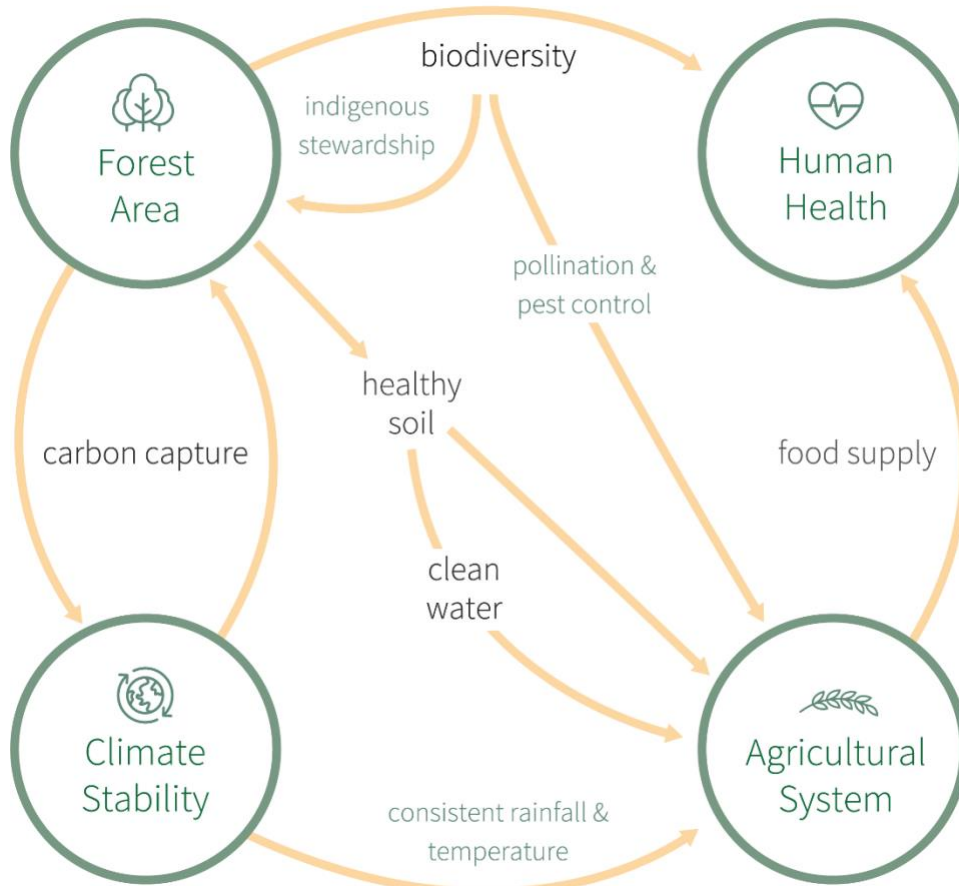


Figure 1. This systems dynamics map illustrates the positive interplays between forests and three other key foundational social and environmental systems upon which investors depend. Forest-positive dynamics can have positive influence on these other three spheres.

## VALUE DESTROYING SYSTEM

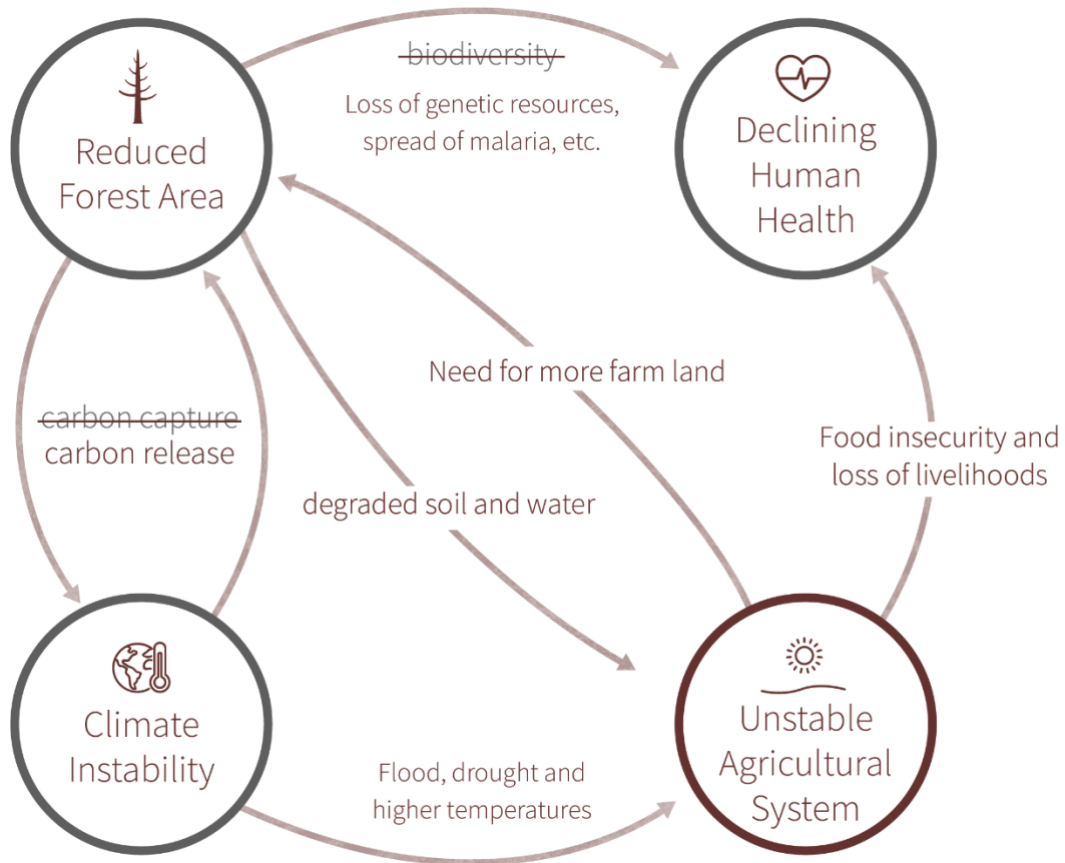


Figure 2. This systems dynamics map illustrates the negative interplays between forests and three other key foundational social and environmental systems upon which investors depend. Forest-positive dynamics can have negative influence on these other three spheres.

## **Domini Forest Project Systems Dynamics Maps - 2022**

**Before investing, consider each Fund's investment objectives, risks, charges and expenses. Contact us at 1.800.582.6757 for a prospectus containing this and other important information. Read it carefully.**

An investment in the Domini Funds is not a bank deposit, is not insured, and is subject to certain risks, including loss of principal. An investment in the Domini Impact Equity Fund is subject to certain risks, including impact investing, portfolio management, information, market, mid- to large-cap companies, and small-cap companies risks. An investment in the Domini International Opportunities Fund is subject to certain risks, including foreign investing, geographic focus, country, currency, impact investing, portfolio management, and information risks. An investment in the Domini Sustainable Solutions Fund is subject to certain risks, including sustainable investing, portfolio management, information, market, mid- to large-cap companies, and small-cap companies risks. An investment in the Domini Impact International Equity Fund is subject to certain risks, including foreign investing and emerging markets, geographic focus, country, currency, impact investing, portfolio management, and quantitative investment approach risks. Investing internationally involves special risks, such as currency fluctuations, social and economic instability, differing securities regulations and accounting standards, limited public information, possible changes in taxation, and periods of illiquidity. These risks may be heightened in connection with investments in emerging market countries. An investment in the Domini Impact Bond Fund is subject to certain risks, including impact investing, portfolio management, style, information, market, interest rate, and credit risks. The Adviser's evaluation of environmental and social factors in its investment selections and the timing of the Subadviser's implementation of the Adviser's investment selections will affect the Fund's exposure to certain issuers, industries, sectors, regions, and countries and may impact the relative financial performance of the Fund depending on whether such investments are in or out of favor. The value of your investment may decrease if the Adviser's or Subadviser's judgment about Fund investments does not produce the desired results. There is a risk that information used by the Adviser to evaluate environmental and social factors, may not be readily available or complete, which could negatively impact the Adviser's ability to evaluate such factors and Fund performance. The Domini Funds are only offered for sale in the United States. DSIL Investment Services LLC, Distributor, Member FINRA. Domini Impact Investments LLC is the Funds' Adviser. The Funds are subadvised by unaffiliated entities. 1/23